

Switch Interface Installation  
Oracle FLEXCUBE Universal Banking  
Release 14.4.0.0.0  
[May] [2020]



---

# Table of Contents

- 1. SWITCH INTERFACE INSTALLATION ..... 1-1
  - 1.1 INTRODUCTION ..... 1-1
  - 1.2 INSTALLING SWITCH INTERFACE ..... 1-1

# 1. Switch Interface Installation

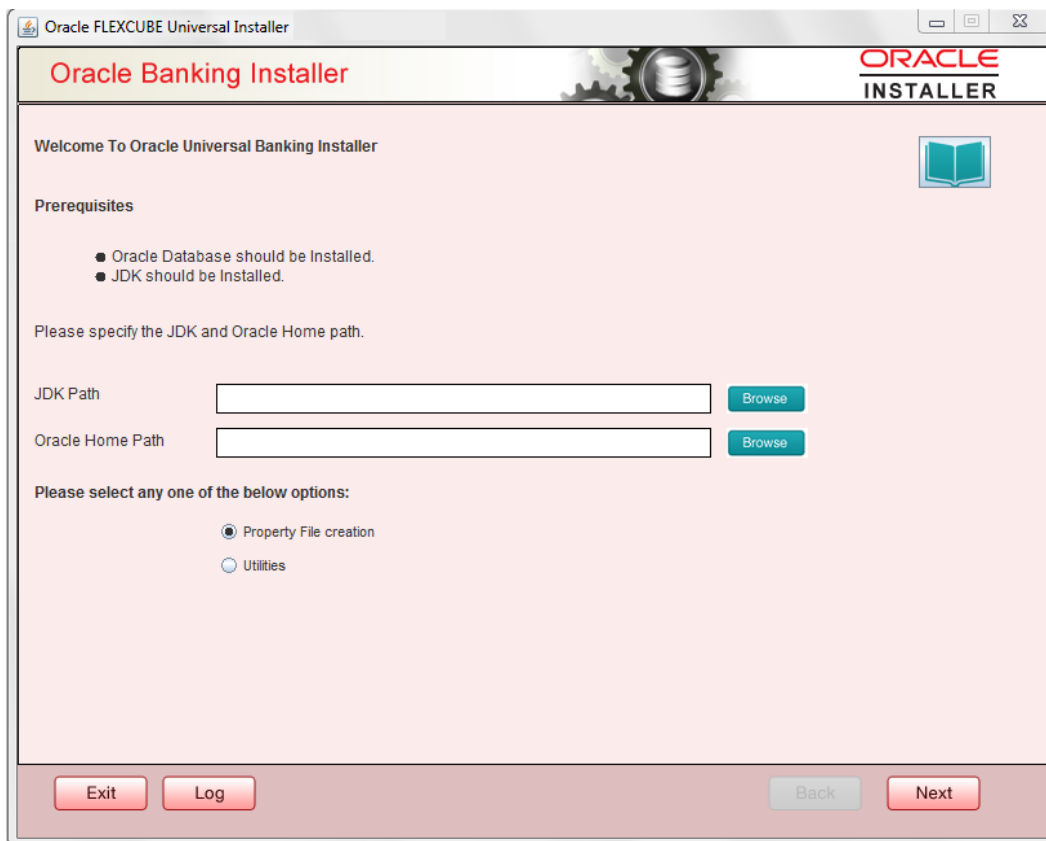
## 1.1 Introduction

This document explains about the switch interface installation.

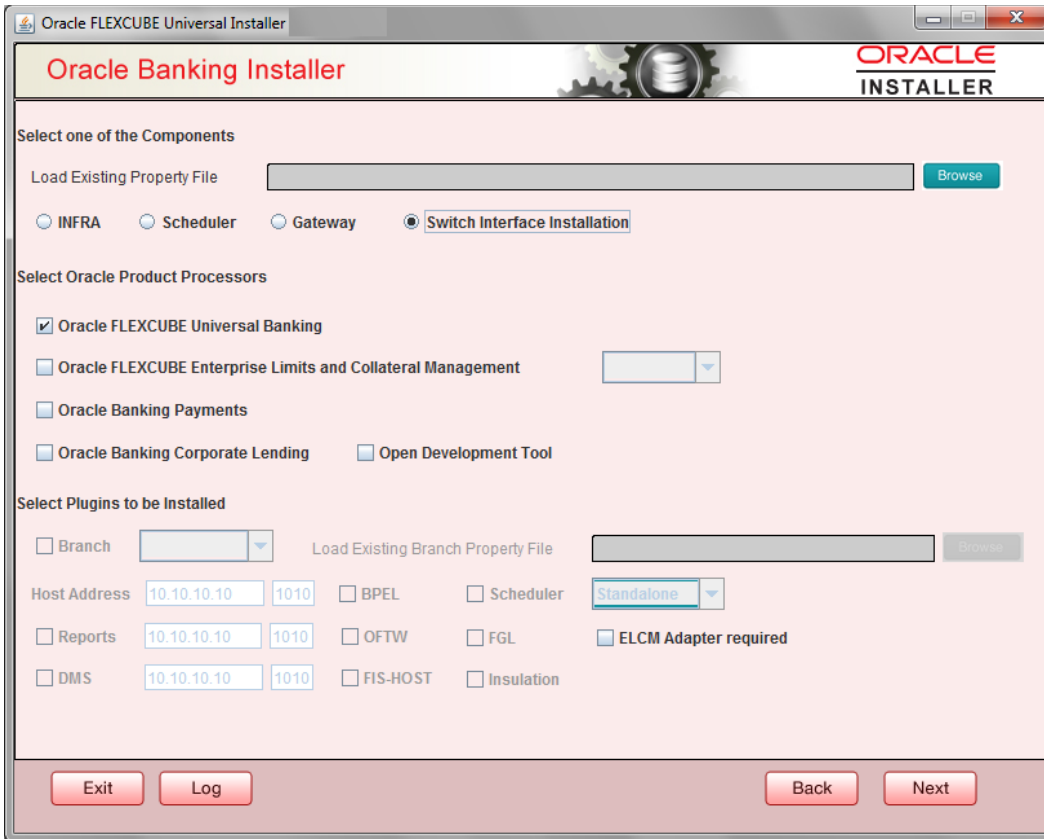
## 1.2 Installing Switch Interface

To install switch interface, follow the steps below:

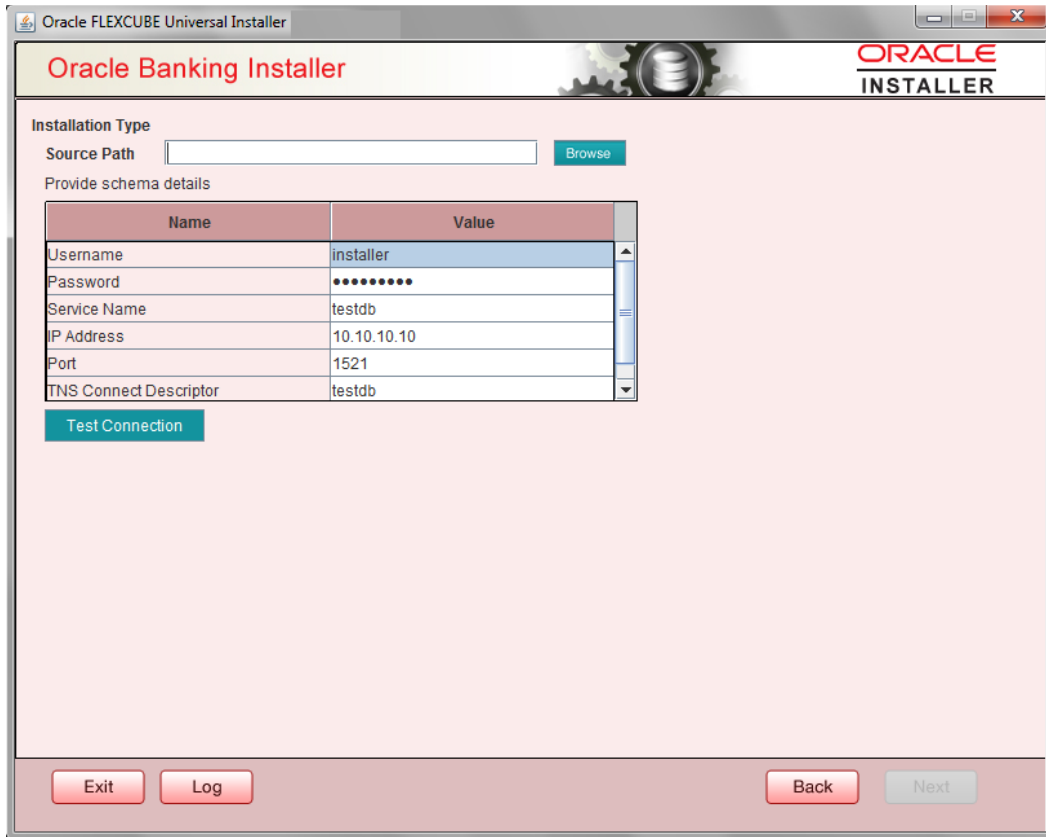
1. Run 'FCUBSInstaller.bat' batch to launch Oracle FLEXCUBE Universal Installer. The following screen is displayed.



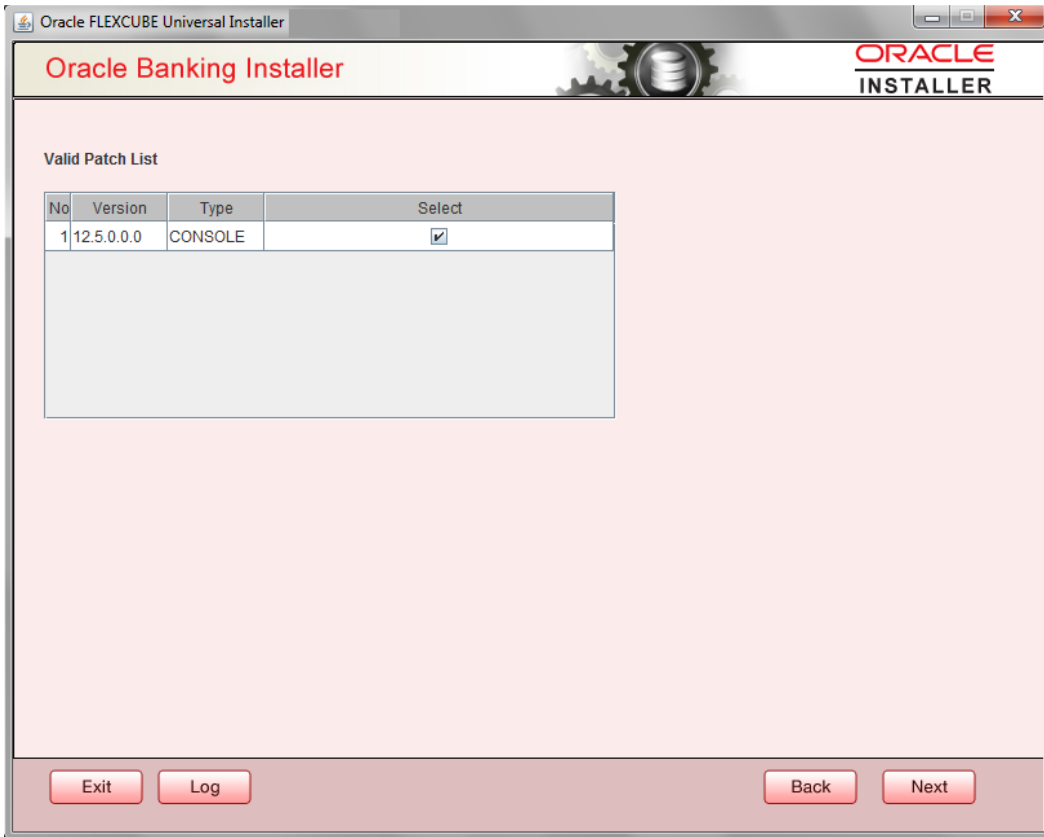
2. Enter appropriate JDK Path and Oracle Home Path.
3. Click Property File Creation and click "Next". The following screen is displayed.



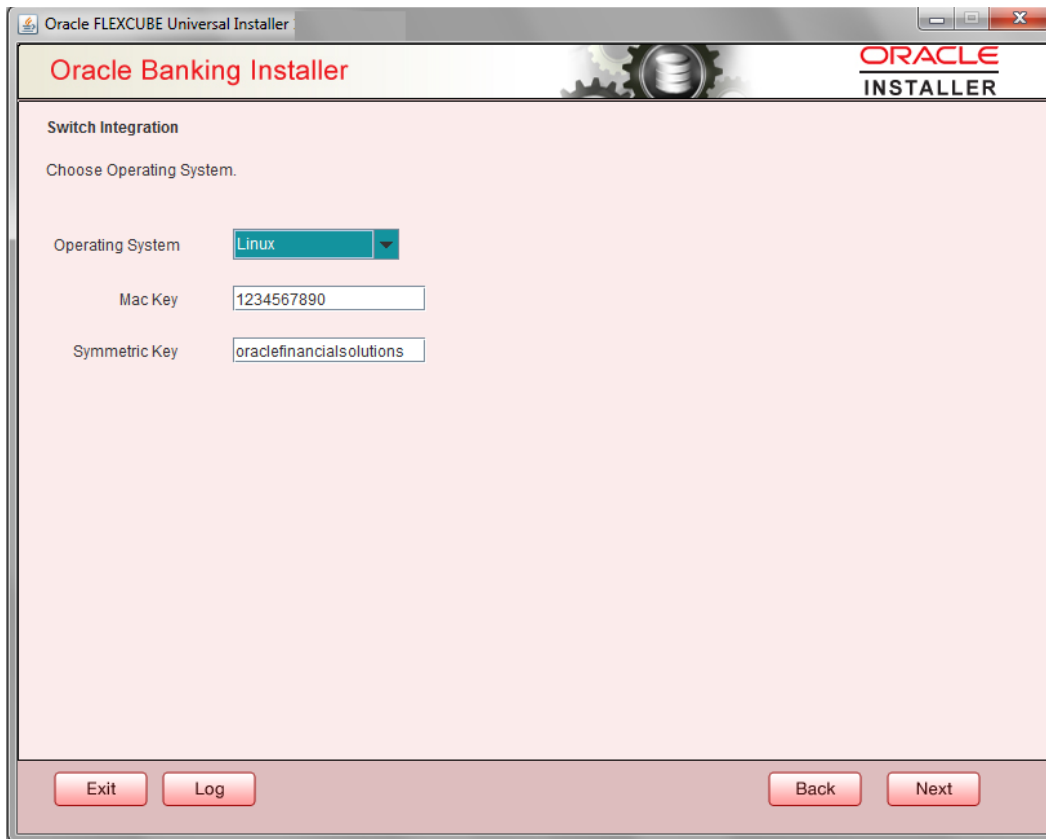
4. Select 'Switch Interface Installation'.
5. Click 'Next'. The following screen is displayed.



6. Enter Source Path and schema details. The Source Path is the place where FCHOME.ini file is there. Also do Test Connection to check Schema details are correct.
7. Based on the FC HOME chosen, the valid list of deployable units are listed as shown in the next screen:



8. Choose the required set of Main and Patch releases. Click Next. Following screen is shown.



9. Specify the following details:

**Operating System**

Select the operating system from the adjoining drop-down list.

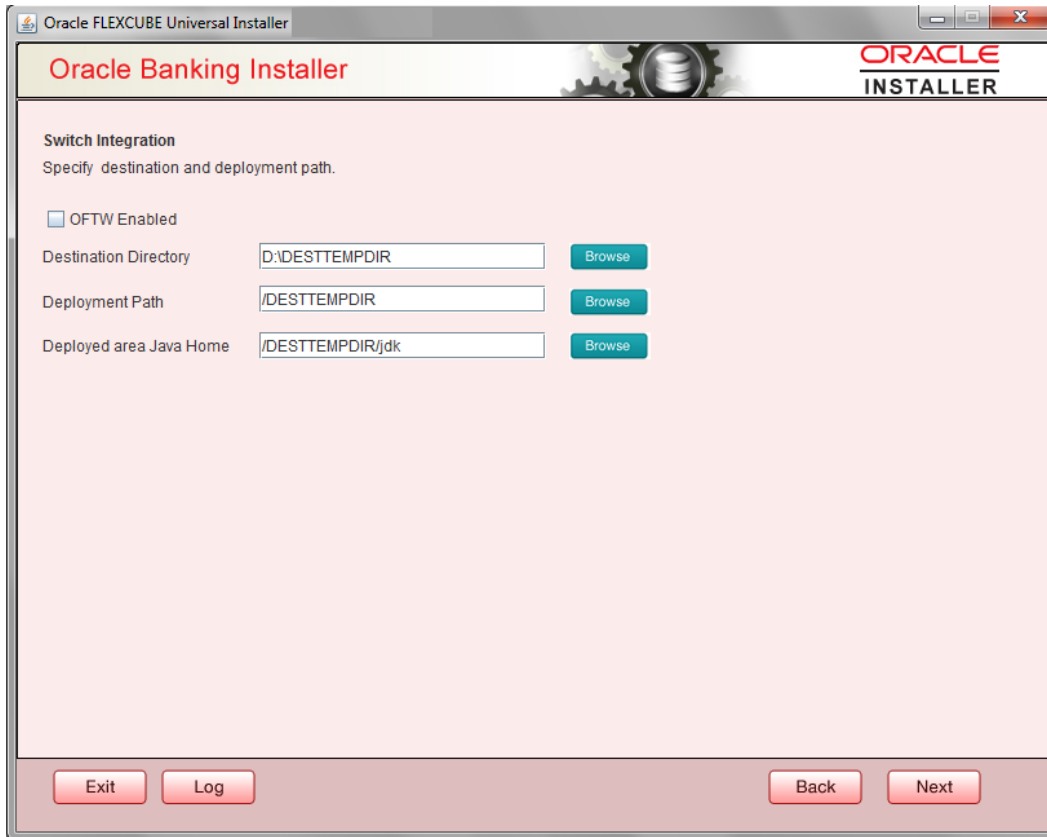
**Mac Key**

Give Mac key which is used in switch Integration application.

**Symmetric Key**

Symmetric Key is used to encryption and decryption.

10. Click 'Next'. The following screen is displayed.



11. Specify the following details:

**OFTW Enabled**

Specify whether OFTW inclusion is required or not.

Note: OFTW - Oracle Flexcube Testing Workbench

### **Destination Directory**

Specify the destination directory. You can use the directory button to browse to the location. This has to be on the local machine. For example, D:\switch\dest

Deployment Path & Deployment Area Java Home folders have to manually created on the server and the same paths must be given in the below steps.

### **Deployment Path**

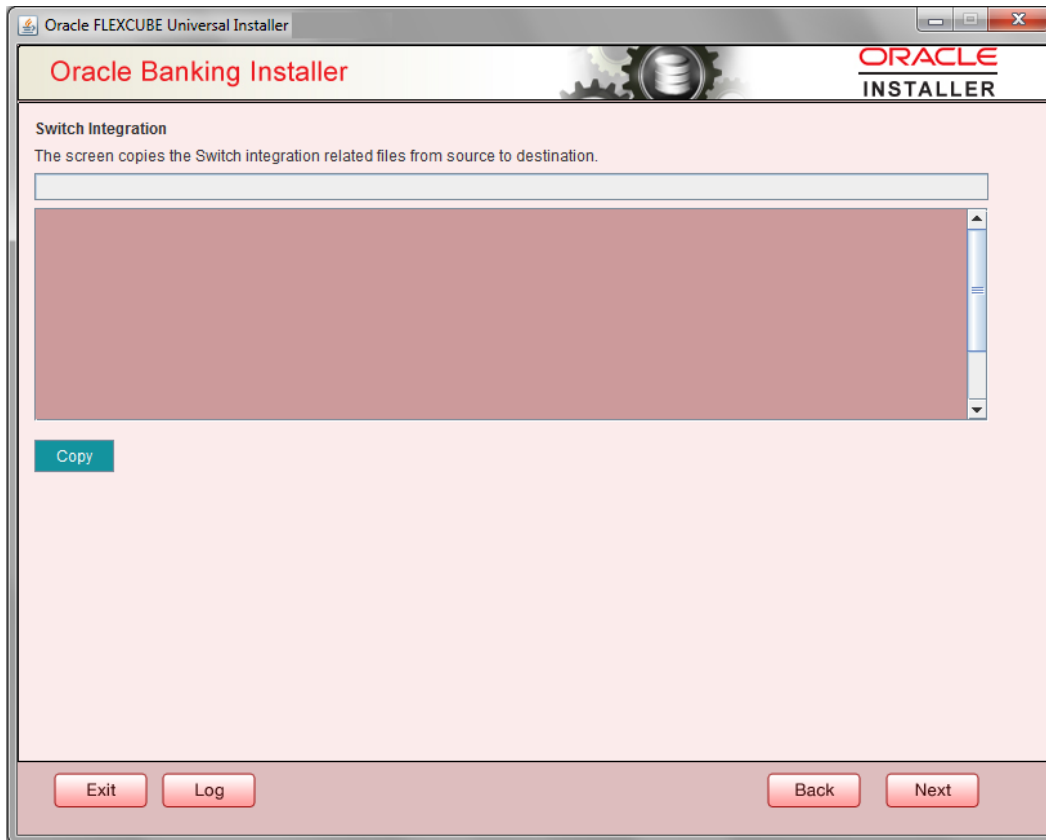
Specify the deployment Path. You can use the directory button to browse to the location. This has to be on the server. Example: /scratch/WORK\_AREA/DEV/FC141INSTEST/SWITCH



## Deployed area Java Home

Specify the deployed area java home. You can use the directory button to browse to the location. This has to be on the server. Example: /scratch/WORK\_AREA/DBA/jdk1.8.0\_171

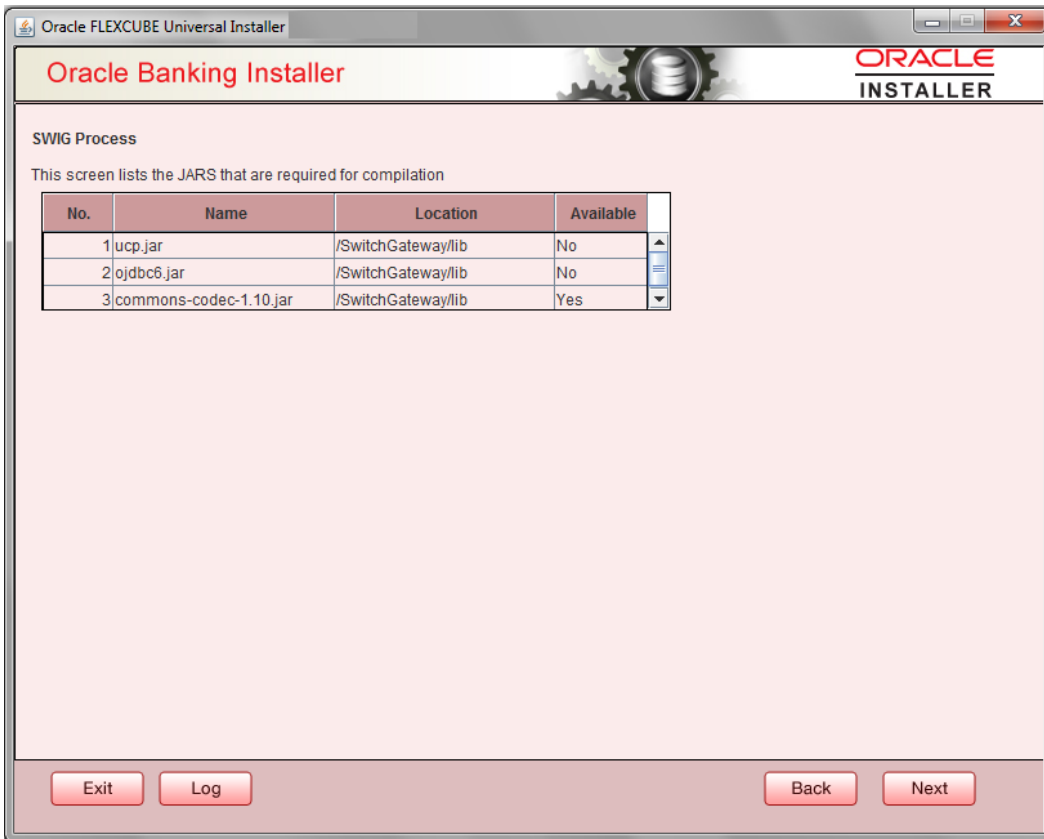
12. Click 'Next'. The following screen is displayed.



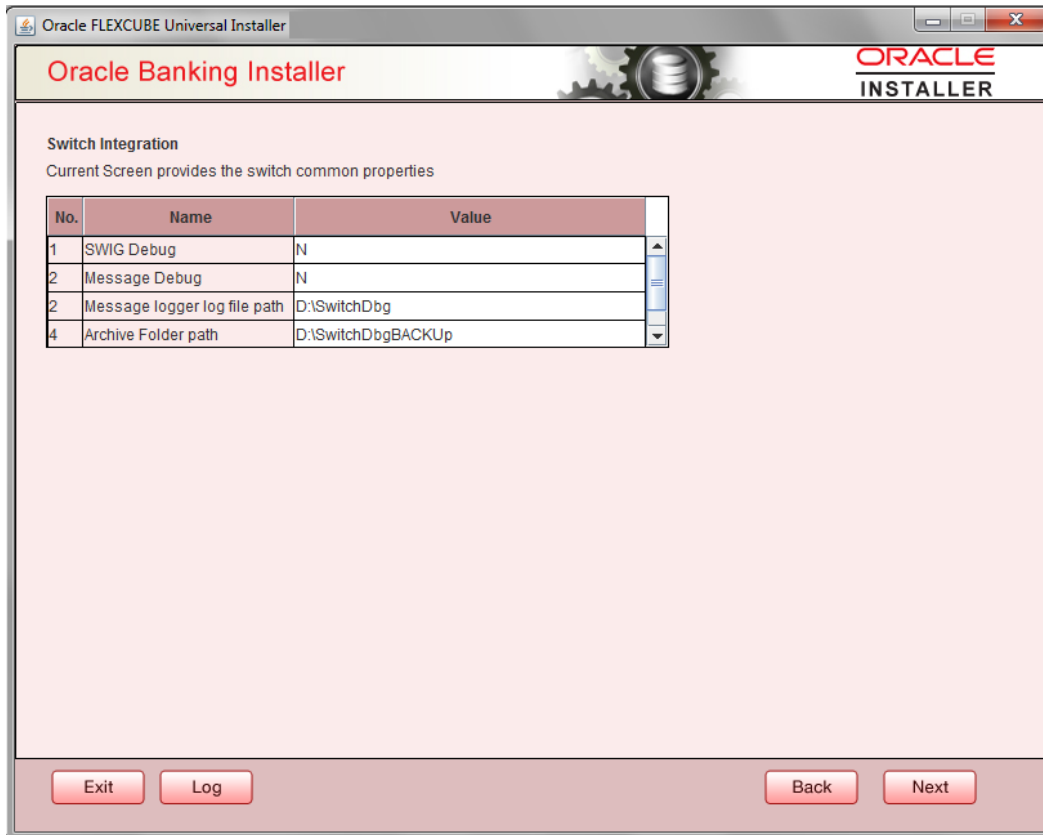
13. Click 'Copy' to copy the switch integration related files from the source to destination.

14. Click 'Next'. The following screen is displayed.

This screen shows list of jars required for compilation. This screen will be available in SOFT mode only. Availability of jars in respective location will be shown in Available column as Yes/No.



15. Click 'Next'. The following screen is displayed.



Specify the following general switch properties details:

### **SWIG Debug (SWIG- Switch Integration Gateway)**

Select 'Y' if debug is required. If you select 'Y', then the exceptions generated in the SWIG java layer will be recorded in the Message Logger log file path.

### **Message Debug**

Select 'Y' if Message debug is required. If you select 'Y', then the request and response messages will be recorded in Message Logger log file path.

### **Message logger File Path**

Specify the path for log files to be written.

### **Archive Folder Path**

The system displays the folder path where all the logged files are archived; however you can modify this, if required.

### **Debug Available Days**

The system displays the number of days after which the debug files will be archived; however, you can modify this, if required.

16. Click 'Next'. The following screen is displayed.

S.No.	Channel	Port	Channel Type	Include
1	CHANNEL1	2100	ATM	<input type="checkbox"/>
2	CHANNEL2	2102	ATM	<input type="checkbox"/>
3	CHANNEL3	2104	ATM	<input type="checkbox"/>
4	CHANNEL4	2108	ATM	<input type="checkbox"/>
5	CHANNEL5	2110	ATM	<input type="checkbox"/>
6	CHANNEL6	2112	ATM	<input type="checkbox"/>
7	CHANNEL7	2114	ATM	<input type="checkbox"/>
8	CHANNEL8	2116	ATM	<input type="checkbox"/>
9	CHANNEL9	2118	ATM	<input type="checkbox"/>
10	CHANNEL10	2120	ATM	<input type="checkbox"/>

Internal Request Acceptor Socket Port

17. Configure the channels that are used.

### Port

The system displays the port number of the corresponding channel to which the switch can connect to send/receive transactions.

### Channel Type

Select the channel name to be used as an identifier in Switch to send/receive transactions. Select one of the following:

- ATM
- POS
- IVR
- ALL

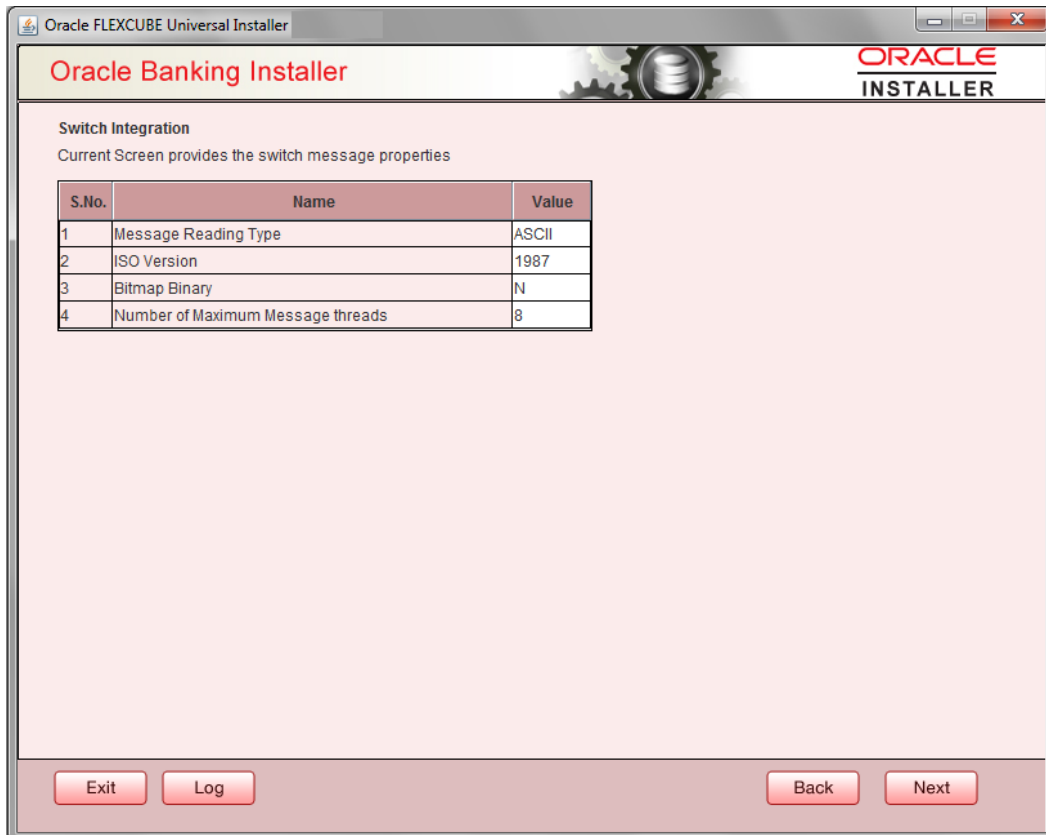
### Include

If you check this box, the switch can communicate with the corresponding port. If unchecked, the Switch cannot communicate with the corresponding port.

## Internal Request Acceptor Socket Port

System displays the internal request acceptor socket port number; however you can modify this, if required.

18. Click 'Next'. The following screen is displayed.



19. Specify the following details to configure the message type.

### Message Reading Type

The system displays the way in which messages are read. This can be either 'ASCII' or 'Binary'; however, you can modify this, if required.

### ISO Version

The system displays the ISO version using which the Switch server will be communicating with our system; however, you can modify this, if required. The allowed values are 1987, 1993, 2003. The default value is 1987.

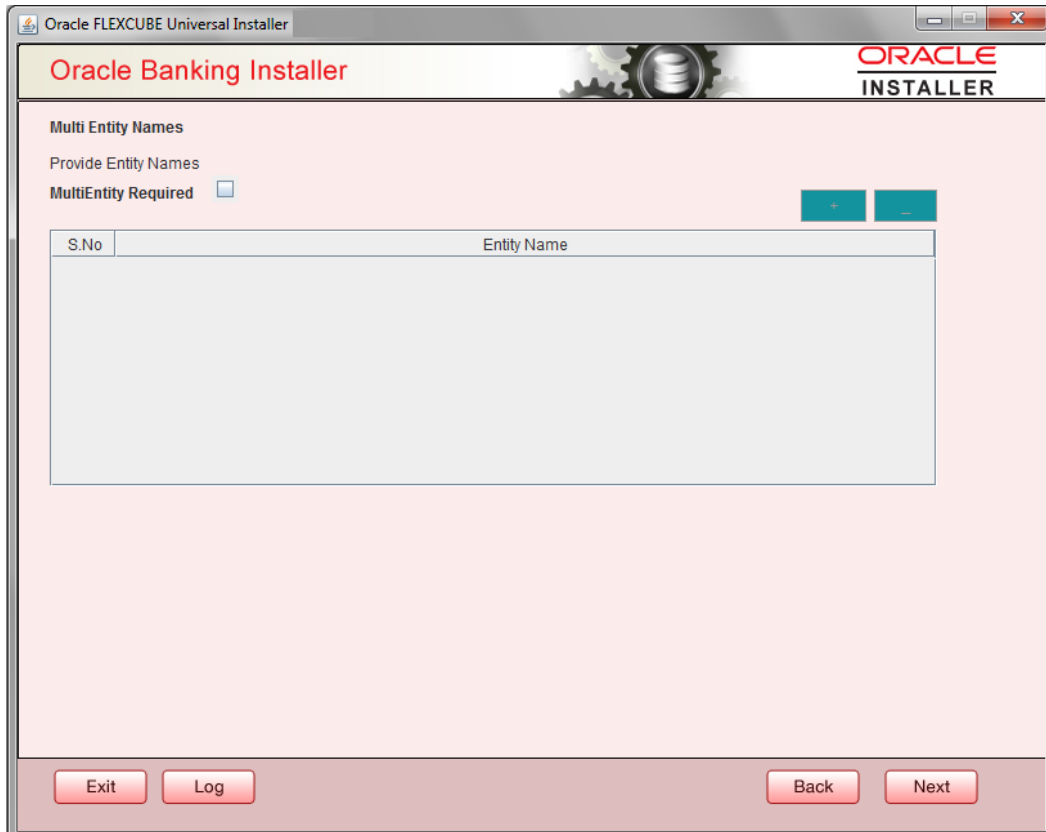
### Bitmap Binary

The system displays the bitmap type of the message. This can be 'Binary Bitmap' or 'ASCII Bitmap'. Select 'N' to indicate the 'ASCII Bitmap'; whereas, select 'Y' to indicate the 'Binary Bitmap'.

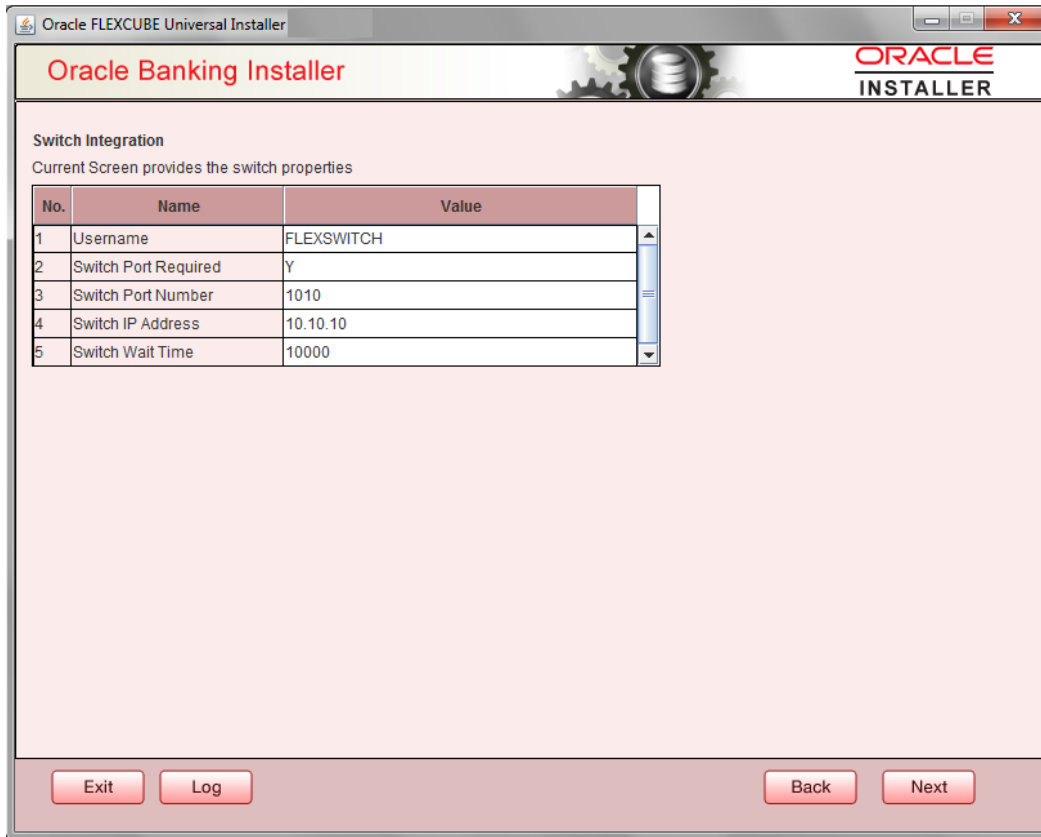
## Number of Maximum Message threads

Specify the no of message threads. By default, it is eight.

20. There is an option to provide Multi Entity names.



21. Click 'Next'. The following screen is displayed.



22. Specify the following details to configure the Switch properties.

### Username

The system displays the Oracle FLEXCUBE user name that has all the rights.

### Switch Port Required

The system displays if the Switch port is required. If 'Y' is selected, then SWIG can communicate with Switch Port Number, if 'N' is selected, then SWIG cannot communicate with Switch Port Number. You can modify this, if required.

### Switch Port Number

The system displays the Switch Server Port Number to which our application will send Sign On/Sign Off Message; however you can modify this, if required.

### Switch IP Address

The system displays the Switch Server IP Address to which our application will send Sign On/Sign Off Message; however you can modify this, if required.

## Switch Wait Time

The system displays the time period the application will wait for the response from the switch for Sign On/Sign Off message. You can modify this, if required.

23. This screen provides option to enter the office branch names.

Oracle FLEXCUBE Universal Installer

Oracle Banking Installer

ORACLE  
INSTALLER

Scheduler Details

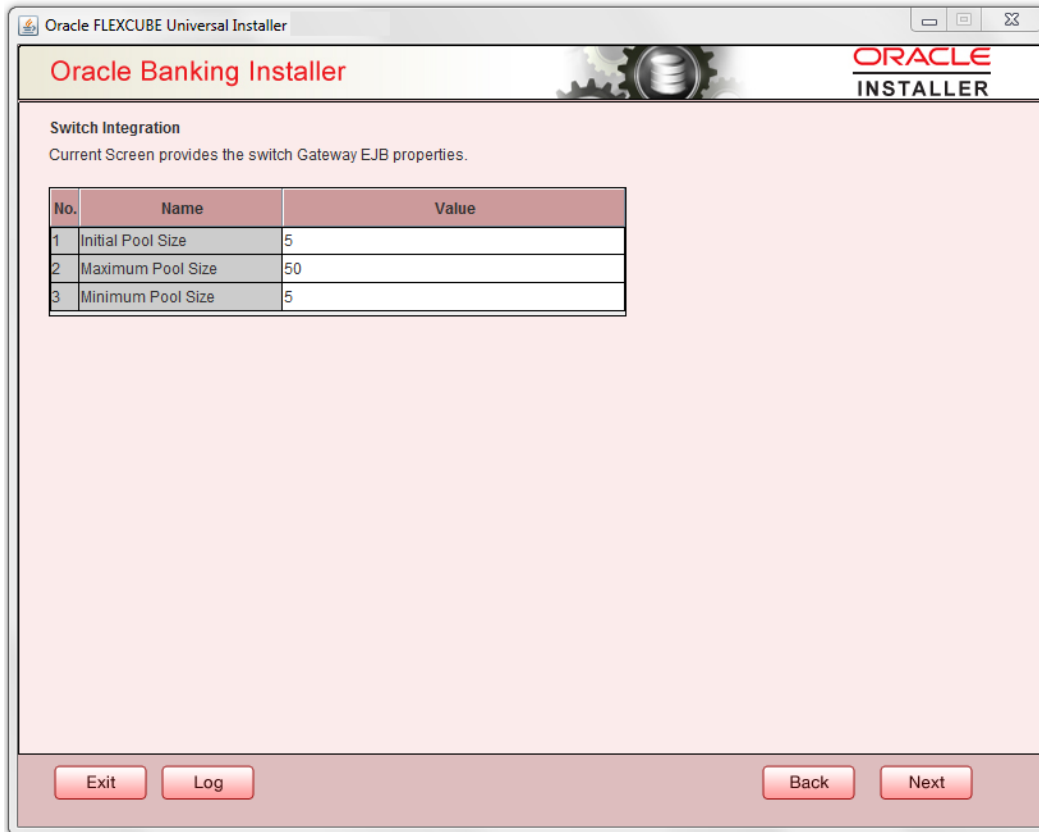
This screen requires standalone scheduler urls

Name	Head Office Branch Name
Head Office	

Exit Log Back Next

24. Click 'Next'. The following screen is displayed.





25. Specify the following details.

### **Initial Pool Size**

The system displays the number of required connections as given by the parameter. The connections are created when it is initialized. This reduces the waiting time.

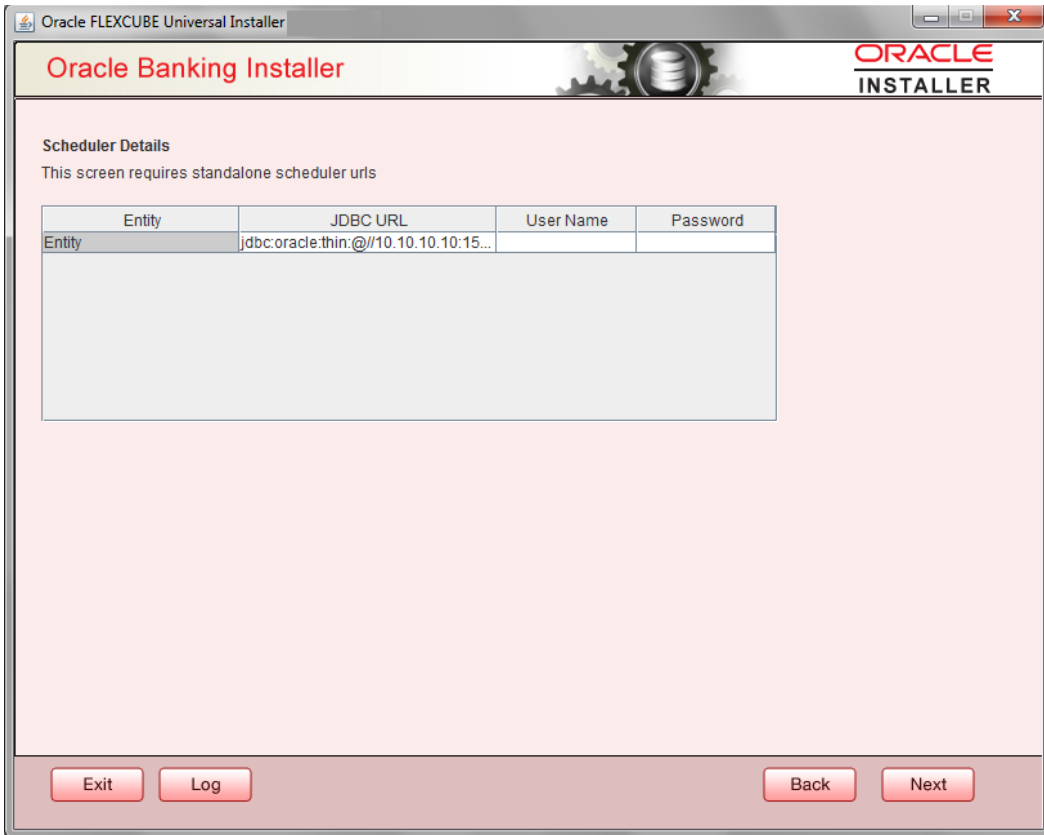
### **Maximum Pool Size**

The system displays the maximum number of connections that can be used.

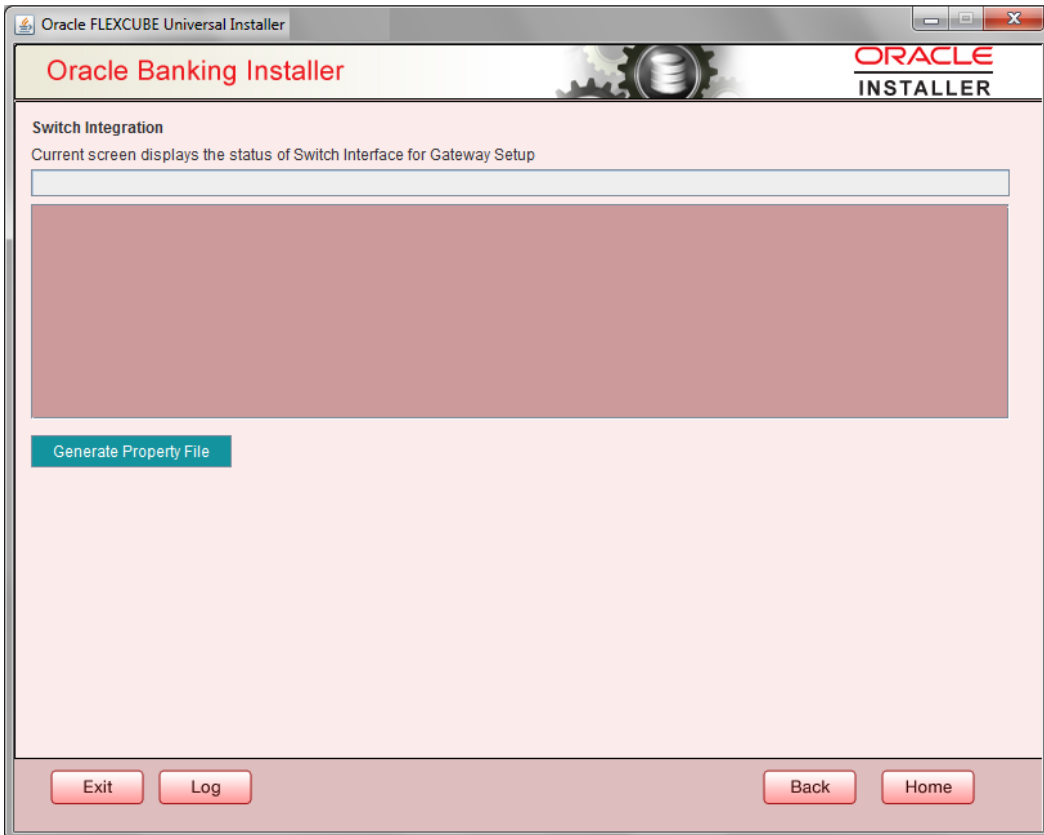
### **Minimum Pool Size**

This parameter indicates the minimum number of connections to be used. If the total count of the number of available connections and the number of connections in use is less than the minimum pool size specified here, then the connection is returned to the pool.

26. Specify the JDBC details of the scheduler.



27. Click 'Next'. The following screen is displayed.



28. Click 'Generate Property File' to start building the process.



Switch Interface Installation  
[May] [2020]  
Version 14.4.0.0.0

Oracle Financial Services Software Limited  
Oracle Park  
Off Western Express Highway  
Goregaon (East)  
Mumbai, Maharashtra 400 063  
India

Worldwide Inquiries:  
Phone: +91 22 6718 3000  
Fax: +91 22 6718 3001  
<https://www.oracle.com/industries/financial-services/index.html>

Copyright © [2007], [2020], Oracle and/or its affiliates. All rights reserved.

Oracle and Java are registered trademarks of Oracle and/or its affiliates. Other names may be trademarks of their respective owners.

**U.S. GOVERNMENT END USERS:** Oracle programs, including any operating system, integrated software, any programs installed on the hardware, and/or documentation, delivered to U.S. Government end users are "commercial computer software" pursuant to the applicable Federal Acquisition Regulation and agency-specific supplemental regulations. As such, use, duplication, disclosure, modification, and adaptation of the programs, including any operating system, integrated software, any programs installed on the hardware, and/or documentation, shall be subject to license terms and license restrictions applicable to the programs. No other rights are granted to the U.S. Government.

This software or hardware is developed for general use in a variety of information management applications. It is not developed or intended for use in any inherently dangerous applications, including applications that may create a risk of personal injury. If you use this software or hardware in dangerous applications, then you shall be responsible to take all appropriate failsafe, backup, redundancy, and other measures to ensure its safe use. Oracle Corporation and its affiliates disclaim any liability for any damages caused by use of this software or hardware in dangerous applications.

This software and related documentation are provided under a license agreement containing restrictions on use and disclosure and are protected by intellectual property laws. Except as expressly permitted in your license agreement or allowed by law, you may not use, copy, reproduce, translate, broadcast, modify, license, transmit, distribute, exhibit, perform, publish or display any part, in any form, or by any means. Reverse engineering, disassembly, or decompilation of this software, unless required by law for interoperability, is prohibited.

The information contained herein is subject to change without notice and is not warranted to be error-free. If you find any errors, please report them to us in writing.

This software or hardware and documentation may provide access to or information on content, products and services from third parties. Oracle Corporation and its affiliates are not responsible for and expressly disclaim all warranties of any kind with respect to third-party content, products, and services. Oracle Corporation and its affiliates will not be responsible for any loss, costs, or damages incurred due to your access to or use of third-party content, products, or services.